

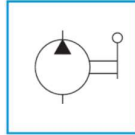
EUROPOWER700

PN Series – ULTRA-HIGH PRESSURE HYDRAULIC LIGHTWEIGHT ALUMINIUM HAND PUMPS

Reservoir Capacity:
1,2 to 7,8 litres

Oil Delivery at Rated Pressure:
0,8 - 1,4 cu.cm./stroke

Maximum Operating Pressure:
1000 – 1600 – 2800 bar



ALU
Lightweight

*Optional add-on
Pressure Gauge, Gauge Adapter
& Accessories (Not Shown)*

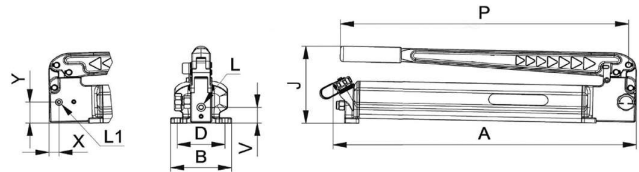
FEATURES

- Compact, lightweight & handy design.
- Durable high strength light aluminium alloy metal.
- Available in Single- or Two-speed operation.
- Low handle effort minimises operator fatigue.
- Handle lever lock for ease of carrying.
- Rear venting plug allows pump to use without venting & for easy oil filling in either horizontal or vertical position.
- Can be used vertically with pump body facing downward.
- Feature easy pump mounting.
- Meet the European Safety Directives.

Also Available in 700 bar (10,000 psi) version

APPLICATIONS

- **PN16#10** (1000 bar) & **PN16#16** (1600 bar) versions ideal for bearing extractions & operating hydraulic bolt tensioners. Outlet port is 1/4" BSP 120°.
- **PN16#28** (2800 bar) version ideal for pressing on & pulling off drive elements, crimping operations, pretensioning of studs, in burst & calibration tests etc. Outlet port is 3/4"-16 UNF cone that uses with stainless steel fittings to provide 2800 bar sealing.



SELECTION CHART

Pump Type (Speed)	Pressure 1st Stage	Pressure 2nd Stage	Oil Delivery per Stroke 1st Stage	Oil Delivery per Stroke 2nd Stage	Handle Effort	For use in Cylinder Tool	Reservoir Capacity	Usable Oil Volume	MODEL	Dimensions (mm)										Weight			
										A	B	D	G	H	F	J	L	L1	P		V	X	Y
Two	20	1000	28,5	1,4	385	Single-acting	2,2	2,0	PN16210	572	128	105	83	460	11	173	1/4" BSP 120°	-	544	30	-	-	6,6
									PN16410	572	190	176	90	471	9	173			544	30	-	-	9,8
									PN16810	652	270	256	90	551	9	173			544	30	-	-	14,5
Single	-	-	-	-	437		2,2	2,0	PN13116	572	115	90	83	460	11	154	1/4" BSP 120°	1/2" BSP	544	31	*	-	3,0
									PN16216	572	128	105	83	460	11	173			544	30	-	-	6,6
									PN16416	572	190	176	90	471	9	173			544	30	-	-	9,8
Two	15	1600	28,5	1,4	522		7,8	7,2	PN16816	652	270	256	90	551	9	173	1/4" BSP 120°	-	544	30	-	-	14,5
									PN13128	572	115	90	83	460	11	154			544	30	-	-	14,5
									PN16228	572	128	105	83	460	11	173			544	30	-	-	14,5
Single	-	-	-	-	432		1,2	1,0	PN13128	572	115	90	83	460	11	154	3/8" BSP	-	544	35	*	-	3,0
									PN16228	572	128	105	83	460	11	173			544	42	28	42	6,8
									PN16428	572	190	176	90	471	9	173			544	42	28	42	10,0
Two	10	2800	28,5	0,8	515	7,8	7,2	PN16828	652	270	256	90	551	9	173	3/4"-16 UNF	3/4"-16 UNF	544	42	28	42	10,0	
								PN16228	572	128	105	83	460	11	173			544	42	28	42	6,8	
								PN16428	572	190	176	90	471	9	173			544	42	28	42	10,0	

*Gauge port on the pump head

EURO POWER HYDRAULICS PTE LTD

1 Tuas South Avenue 6 #01-11, THE WESTCOM, Singapore 637021

Tel: +65-6266 2011 • Fax: +65-6266 2028 • Email: sales@europower700.com • WWW.EUROPOWER700.COM